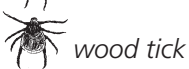


Enjoy the River Safely

- Wear your life jacket. Make sure your child wears a life jacket!
- Use alcohol responsibly. Many river accidents involve alcohol.
- Wear sunscreen, sunglasses, and a hat to prevent sunburn. Water reflects the rays of the sun giving you a double dose of ultraviolet light.
- Avoid trees that have fallen in the river. They can catch and overturn your vessel.
- Don't jump from cliffs, bridges, or trees.
- Protect your feet with river shoes, water sandals, or old shoes. Fish hooks, glass, and rocks can injure your feet.
- Bring your own drinking water. Treat river water before drinking to avoid giardia, a serious stomach irritant.
- Blastomycosis is a fungal infection that is commonly contracted by dogs and sometimes by humans. Avoid digging in moist soils.
- Check for ticks often and know the symptoms of Lyme disease. Deer ticks are common along the Riverway and some carry the bacteria that cause the disease.
- Know how to identify poison ivy and avoid contact.



deer tick



wood tick



poison ivy

National Park Service St. Croix National Scenic Riverway



St. Croix River Map 8: Highway 8 to Osceola Landing



Baltimore oriole

What do the St. Croix River and the country of Costa Rica have in common?

Many of the same species of birds are found in both places, although at different times of year. These birds spend winter in Costa Rica and then migrate hundreds of miles north in the spring and summer to nest and breed. Many nest along this stretch of the St. Croix!

Due to this important connection, Costa Rican national parks on the Osa Peninsula have a "sister park" agreement with thirteen U.S. national parks, including the St. Croix National Scenic Riverway, to coordinate public awareness, education, habitat restoration, and protection of these areas.

Discover clean water, lush landscapes, and quiet solitude along the St. Croix National Scenic Riverway, a national park that with your help protects 255 miles of wild and scenic river corridor.



Top Riverway Regulations

- Approved life jackets for each person are required on your vessel. Children under 13 are required to wear a life jacket.
- Please do not bring glass containers to the Riverway. Broken glass cuts bare feet.
- Disposing human waste into the river is prohibited.
- Jumping from cliffs, bridges, or trees is illegal and dangerous.
- Open campfires are allowed only in metal fire rings. Campfires must be out and cold before you leave the area.
- The cutting of live vegetation is strictly prohibited. Dead and down wood may be collected for campfires from shoreline areas, but not from islands.
- Possession of firewood that originates more than 25 miles from the Riverway is prohibited.
- Individual campsites accommodate a maximum of 8 people and 3 tents. Group sites accommodate a maximum of 16 people and 6 tents.
- Littering is not allowed. Carry out all trash.
- It is illegal to shoot or possess fireworks on lands and waters within the Riverway.
- Collecting freshwater mussels, mussel shells, wildflowers, and historical artifacts is prohibited.
- Quiet hours are 10:00 p.m. to 6:00 a.m.

Boating Speed Regulations

The area south of the hydroelectric dam in Taylors Falls/St. Croix Falls to the mouth of the Apple River is designated a slow speed zone. Motorboats may only create a minimal wake.

Much of the property along this section of the St. Croix River is privately owned. Please observe the rights of the property owners by not trespassing or using facilities without the landowner's permission.

MINNESOTA
CHISAGO COUNTY

to North Branch
Hydroelectric Dam
Portage right 1.5 miles
St. Croix River Visitor Center S53.8
St. Croix Falls
to Turtle Lake

Minnesota Interstate State Park Landing (fee) S51.5

Wisconsin Interstate State Park Landing (fee) S52.1

0 1 2 miles

- Boat launch
- Unpaved boat launch
- Visitor information
- Ranger station
- Restrooms
- Drinking water
- Primitive shoreline campsite
- Primitive shoreline group campsite
- Developed campground
- Picnic area
- Picnic shelter
- Hiking trailhead
- Pets on leash
- Fishing pier
- Campsite/Landing river mile
- River mileage
- Rapids
- St. Croix National Scenic Riverway
- State lands
- Hiking trail



St. Croix National Scenic Riverway

St. Croix River Map 8: Highway 8 to Osceola



St. Croix River Visitor Center
 401 North Hamilton Street
 St. Croix Falls, Wisconsin
 (715) 483-2274
 Website: www.nps.gov/sacr
In emergencies – dial 911

Follow us on