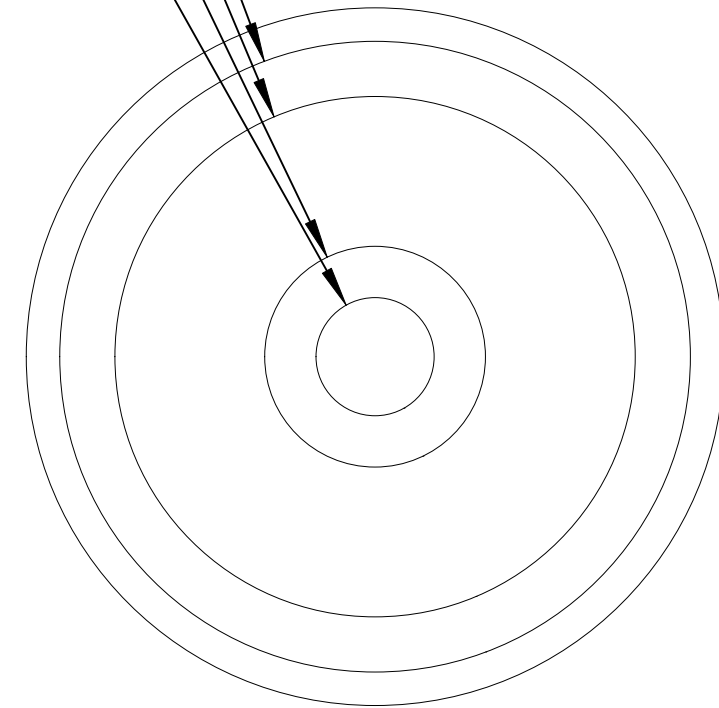
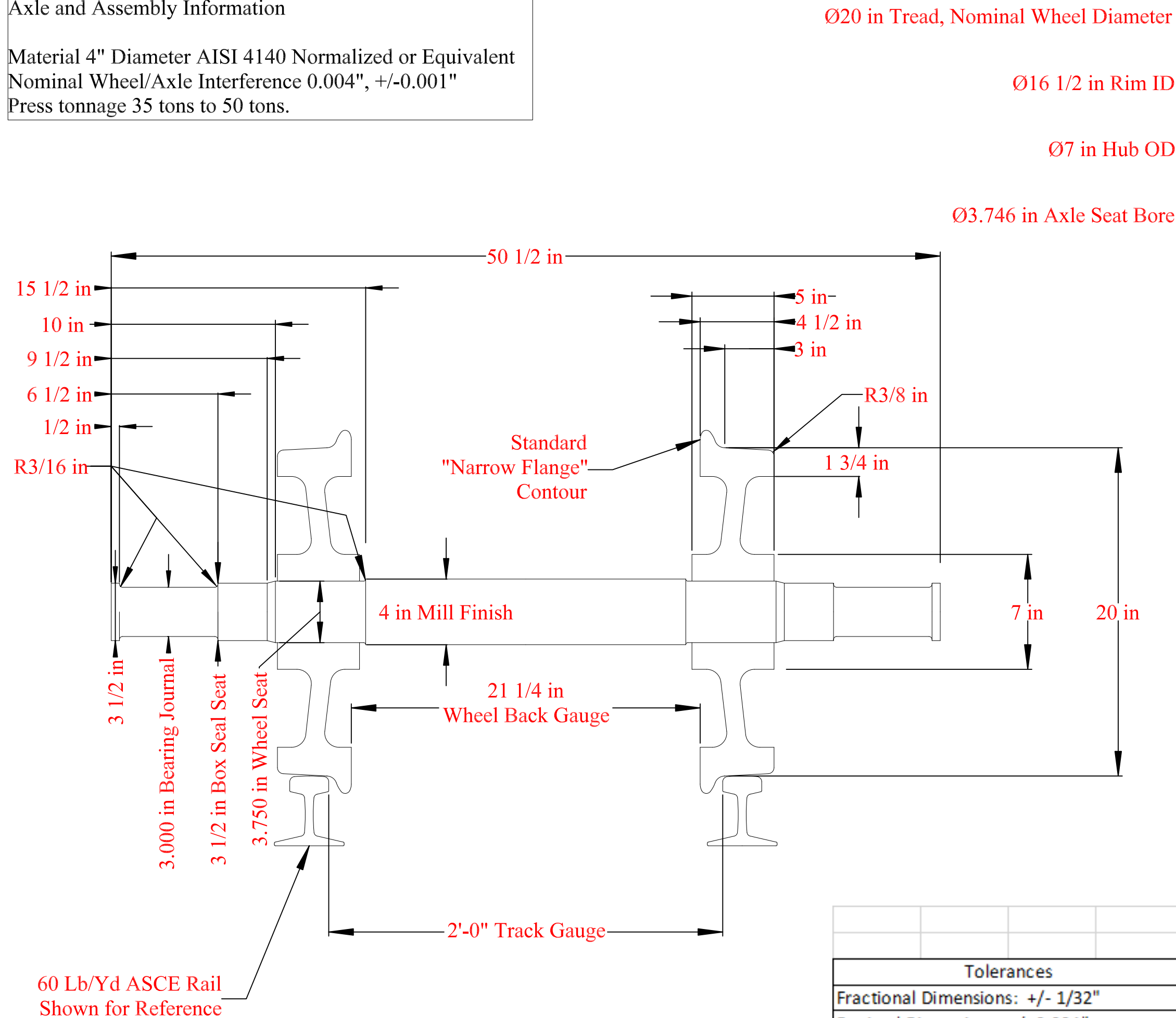


Axle and Assembly Information

Material 4" Diameter AISI 4140 Normalized or Equivalent
 Nominal Wheel/Axle Interference 0.004", +/-0.001"
 Press tonnage 35 tons to 50 tons.

Wheel Information
 20" Nominal Wheel Diameter
 AISI 1070 Vacuum Degassed
 Rim-Toughened to 321 BHN Min.
 McKees Rocks Forgings
 Wheel Section WIW-202
 Modified as Follows:
 Tread Type 2 (Narrow Flange)
 3/8" Radius Outside Tread Edge
 Rim 1 3/4" Thick by 4 1/2" Wide
 Hub 7" Diameter by 5" Thick



Wiscasset, Waterville and Farmington Railway			
Railway Equipment Maintenance			
Standard 20" Wheelset using McKees Rocks Wheel			
Tolerances		Drawn	Date
Fractional Dimensions: +/- 1/32"		JML	4/2/2020
Decimal Dimensions: +/- 0.001"		Revised	R4/3/2020