

# Gulp and Swallow - A Food Chain Card Game

## Set Up

Reproduce and enlarge these playing cards, cut out and laminate. You need one copy of the 30 cards for every two players.

## Object of the Game

Collect all your opponent's cards to win the game.

## Playing the Game

- Shuffle and equally divide all cards. ▶ Players hold all their cards in one pile, face down.
- ▶ At the same time, players turn over the top card from the pile. ▶ The card that is higher on the food chain wins and the player takes both cards. ▶ If a tie occurs, both players place two cards face down. ▶ Then they place a third card face-up. ▶ The face-up card that's higher on the food chain takes all the cards.
- ▶ When out of cards, a player shuffles winnings and continues playing. ▶ The winner is the person who has all cards.



[www.marine.ac.nz](http://www.marine.ac.nz)

[www.school.albatross.org.nz](http://www.school.albatross.org.nz)



NEW ZEALAND  
MARINE STUDIES CENTRE  
UNIVERSITY OF OTAGO

## Food Chain

## Gulp and Swallow Sequence



Gulps



Swallows



Gulps



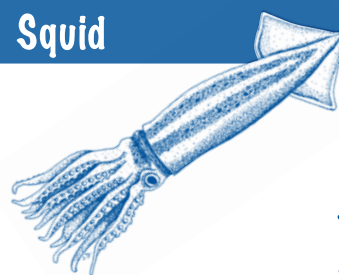
Swallows



Gulps

no one  
(they make their own food).

Squid



Size - 1 metre

Yellow-Eyed Mullet



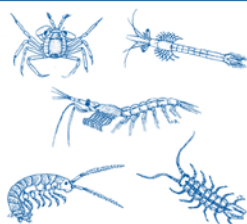
Size - 28-40 cm

Yellow-Eyed Mullet



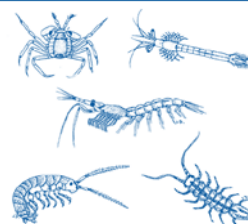
Size - 28-40 cm

Zooplankton



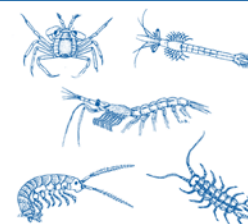
Size - 1cm or Less

Zooplankton



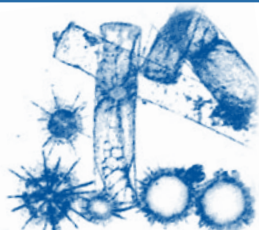
Size - 1cm or Less

Zooplankton



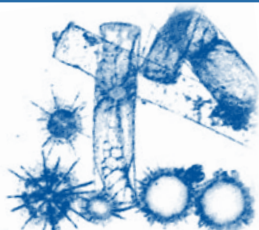
Size - 1cm or Less

Phytoplankton



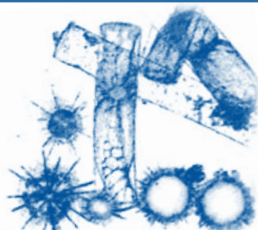
Size - microscopic

Phytoplankton



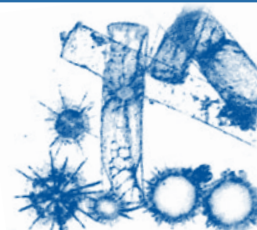
Size - microscopic

Phytoplankton



Size - microscopic

Phytoplankton



Size - microscopic

## Answer Card

Who can swallow whom?

Albatross



Squid



Yellow-Eyed Mullet



Zooplankton



Phytoplankton



## Answer Card

Who can swallow whom?

Albatross



Squid



Yellow-Eyed Mullet



Zooplankton



Phytoplankton



## Try This Out!

Can you work out the whole food chain from phytoplankton to the albatross?

Does an albatross really eat phytoplankton?

## Think About This!

Do some research to find out what else these animals might eat.

Who is the top predator of the oceans?

## Did You Know?

This isn't everything these animals eat! It is only a link in a complicated food web. Bigger animals eat smaller animals. Some big animals skip right to the plants. Phytoplankton is a microscopic plant that makes its own food from the sun. Microscopic means you need a microscope to even see it.

Card game adapted from Gamewright's "Chomp" 2003. Yellow-Eyed Mullet drawing from *An Encyclopaedia of New Zealand*, ed. A. H. McLintock, 966.

### Albatross



Size - 3 metre wing-span

### Albatross



Size - 3 metre wing-span

### Albatross



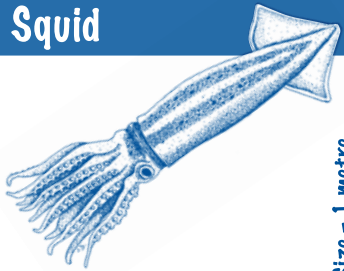
Size - 3 metre wing-span

### Albatross



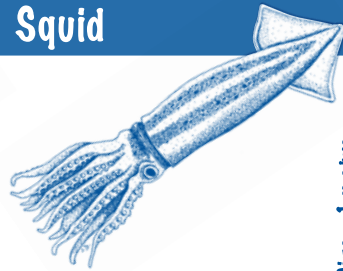
Size - 3 metre wing-span

### Squid



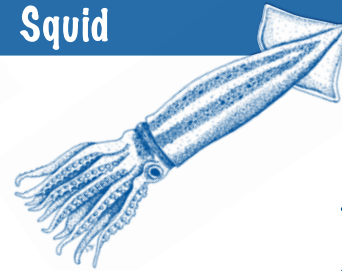
Size - 1 metre

### Squid



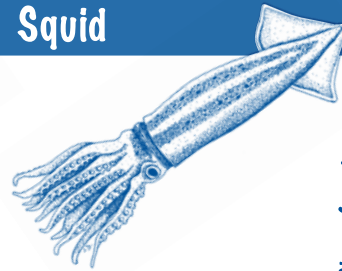
Size - 1 metre

### Squid



Size - 1 metre

### Squid



Size - 1 metre

### Yellow-Eyed Mullet



Size - 28-40 cm

### Yellow-Eyed Mullet



Size - 28-40 cm

### Yellow-Eyed Mullet



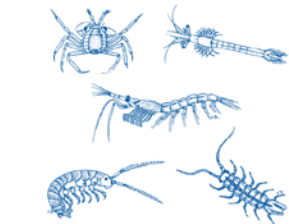
Size - 28-40 cm

### Yellow-Eyed Mullet



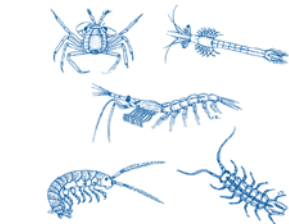
Size - 28-40 cm

### Zooplankton



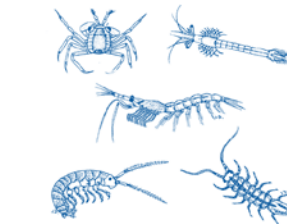
Size - 1cm or Less

### Zooplankton



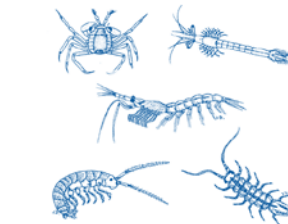
Size - 1cm or Less

### Zooplankton



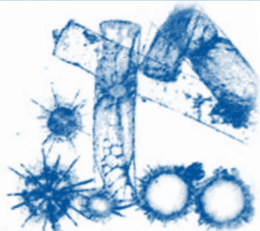
Size - 1cm or Less

### Zooplankton



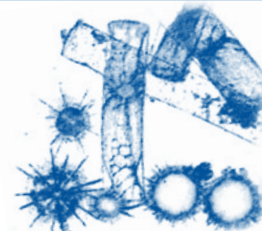
Size - 1cm or Less

### Phytoplankton



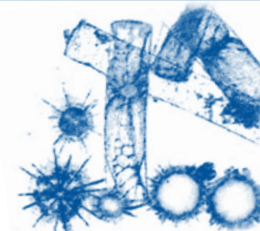
Size - microscopic

### Phytoplankton



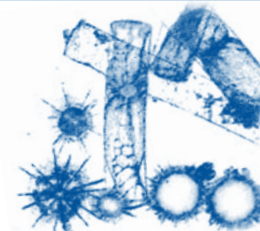
Size - microscopic

### Phytoplankton



Size - microscopic

### Phytoplankton



Size - microscopic