

21st December 2023

UPDATE

Trial Speed Exemption for PPF Vessels

Marine Safety Act 2010 (Vic) Speed Exemption Notice 3.21



Notice of Speed Exemption on the waters of the Yarra River (inbound/outbound) between Beacons 23/24 and the Western drip line of the Bolte Bridge.

Please be advised that PPF vessels MV *Bellarine Express* and MV *Geelong Flyer* on 21st December 2023 received an exemption from Director of maritime Safety (as delegate of Safe Transport Victoria) to operate at an increased speed on the Yarra River for a period of 36 months as follows;

Inbound passages:

- MV Geelong Flyer and MV Bellarine Express may only exceed 8 knots when the visibility in the area of operation is equal or greater than 200 metres.
- MV Geelong Flyer and MV Bellarine Express will display an amber flashing light at all times whilst underway.
- The Master of MV Geelong Flyer and MV Bellarine Express will contact other identified operators on the Yarra River when transiting the Yarra River.
- MV Geelong Flyer and MV Bellarine Express do not exceed 15 knots on inbound passages on the waters between Beacons 23/24 and the southern drip line of the Westgate Bridge.
- MV Geelong Flyer and MV Bellarine Express do not exceed 10 knots on the waters between the Southern Drip Line of the Westgate Bridge and Beacons 39/40 when the Bicycle punt is berthed at Lorimer Street, Landing (eastern side of Yarra River) passages.
- MV Geelong Flyer and MV Bellarine Express do not exceed 6 knots on the waters between beacons 39/40 and the POCC.
- MV Geelong Flyer and MV Bellarine Express do not exceed 15 knots on the waters between the POCC and the Western drip line of the Bolte Bridge.

Outbound Passages:

- MV Geelong Flyer and MV Bellarine Express may only exceed 8 knots when the visibility in the area of operation is equal or greater than 200 metres.
- MV Geelong Flyer and MV Bellarine Express will display an amber flashing light at all times whilst underway.
- The Master of MV Geelong Flyer and MV Bellarine Express will contact other identified operators on the Yarra River when transiting the Yarra River.
- The Masters of MV Geelong Flyer and MV Bellarine Express will contact the Master of the Westgate Punt to verify the time they will be passing the area where the Punt operates when the visibility in the area of operation is equal to or less than 20 metres.
- MV Geelong Flyer and MV Bellarine Express do not exceed 15 knots when the visibility in the area of operation is equal or greater than 200 metres.

- MV Geelong Flyer and MV Bellarine Express will display an amber flashing light at all times whilst underway.
- The Master of MV Geelong Flyer and MV Bellarine Express will contact other identified operators on the Yarra River when transiting the Yarra River.
- MV Geelong Flyer and MV Bellarine Express do not exceed 15 knots on the waters between Beacons 23/24 between the Western drip line of the Bolte Bridge and POCC.
- MV Geelong Flyer and MV Bellarine Express do not exceed 8 knots on the waters between the POCC and beacons 39/40.
- MV Geelong Flyer and MV Bellarine Express do not exceed 12 knots on the waters between Beacons 39/40 and the Southern drip line of the Westgate Bridge. between the Western drip line of the Bolte Bridge and POCC.
- MV Geelong Flyer and MV Bellarine Express do not exceed 15 knots on the waters between the Southern drip line of the Westgate Bridge and Beacons 23/24.

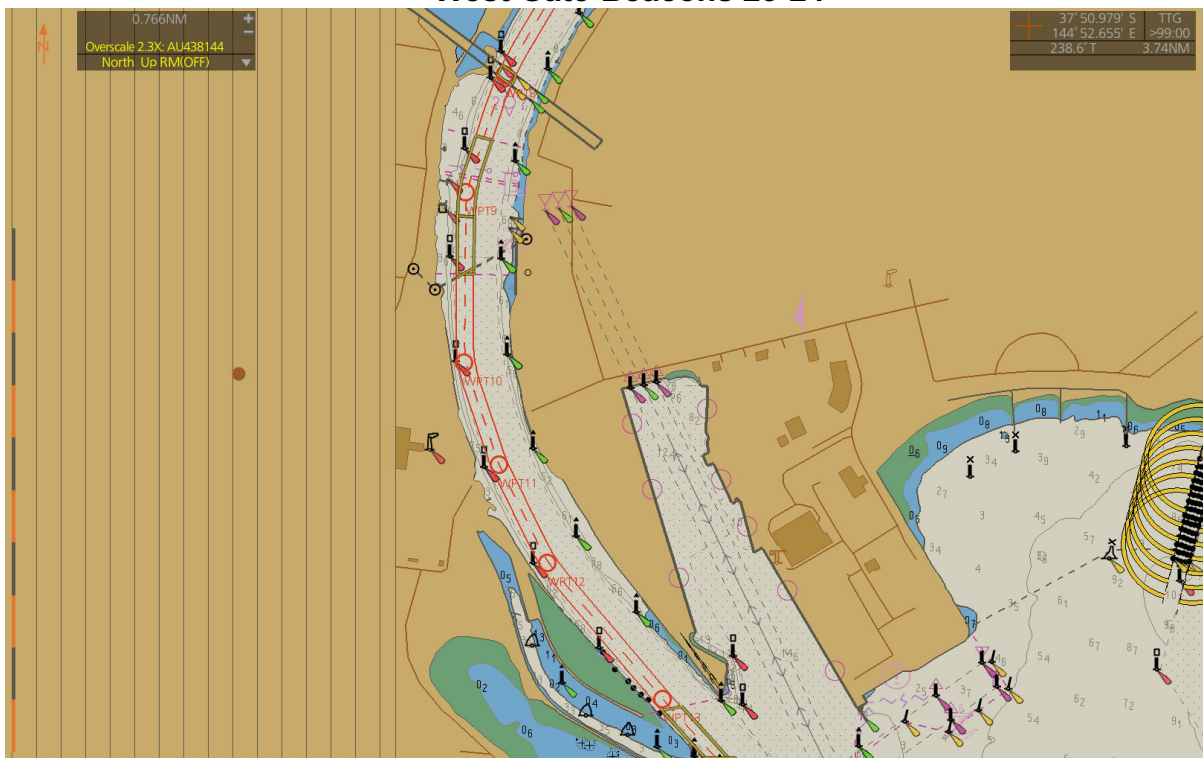
1. PPF Passage Plan for Speed Exemption Areas within the Yarra River

Please see below both the inward and outward passage plans for both vessels for the speed exemption areas. Further details are available upon request.

Bolte Bridge-Westgate



West Gate-Beacons 23-24



2. Vessel Operations

Port Phillip Ferries operate scheduled services between Geelong and Portarlington to Docklands in both directions between the hours 07:00 and 20:00 seven days a week. Please refer to the [timetable](#) on our website.

The vessel Master has the responsibility for the safe and the efficient operation of the vessel. The vessel Master is to monitor the speed of the vessel at all times having due regard to vessel traffic, weather conditions and manoeuvrability of the vessel.

The vessel Master may deviate from nominated passages plans if human life, property or the environment is at risk.

3. Contact Details

Should you have any queries regarding this announcement and/or would like to provide feedback to Port Phillip Ferries regarding this exemption, please contact us between 8am – 2.00pm on (03) 9514 8959 or email info@portphillipferries.com.au.