



Port Phillip Ferries

14<sup>th</sup> September 2022

## UPDATE

# Trial Speed Exemption for PPF Vessels

(Maritime Safety Victoria Speed Exemption Notice 3.18)



### **Trial Speed Exemption – Westgate Bridge to beacons 39 & 40. Beacons 39 & 40 to the Port Control Centre – inbound/outbound passages.**

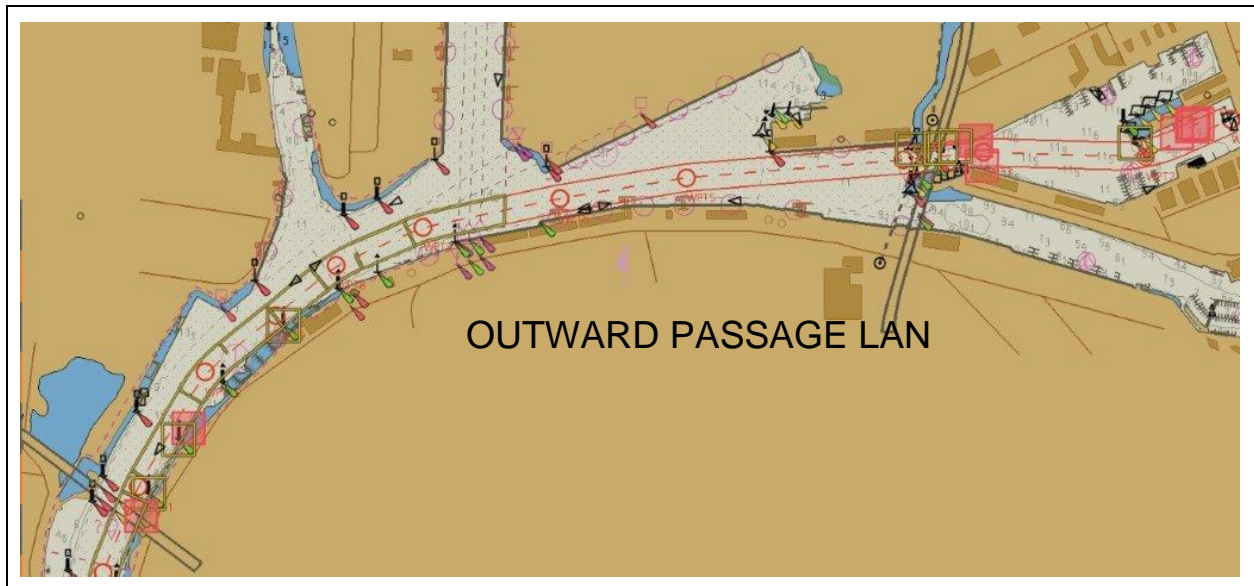
Please be advised that PPF vessels MV *Bellarine Express* and MV *Geelong Flyer* 14<sup>th</sup> September 2022 received a trial exemption from Maritime Safety Victoria (MSV) to operate at an increased speed on the Yarra River for a period of 12 months as follows;

- MV Geelong Flyer and MV Bellarine Express do not exceed 10 knots on the waters between the Southern drip line of the West Gate Bridge and beacons 39 and 40 when the Bicycle Punt is berthed at the Lorimer Street landing (eastern side of Yarra River) on inbound passages.
- MV Geelong Flyer and MV Bellarine Express do not exceed 6 knots on the waters between beacons 39 and 40 and the Port Operations Control Centre on inbound passages.

- MV Geelong Flyer and MV Bellarine Express do not exceed 15 knots on the waters between the Port Operations Control Centre and the Western drip line of the Bolte Bridge on inbound passages.
- MV Geelong Flyer and MV Bellarine Express do not exceed 15 knots on the waters between the Western drip line of the Bolte Bridge and the Port Operations Control Centre on outbound passages.
- MV Geelong Flyer and MV Bellarine Express do not exceed 12 knots on the waters between the Port Operations Control Centre and the Southern drip line of the West Gate Bridge on outbound passages.
- MV Geelong Flyer and MV Bellarine Express may only exceed 6 knots when the visibility in the area of operation is equal to or greater than 200 metres.
- MV Geelong Flyer and MV Bellarine Express will slow to 6 knots or less when visibility is 200 metres or less.
- MV Geelong Flyer and MV Bellarine Express will display an amber flashing light at all times while underway.
- The Masters of the MV Geelong Flyer and MV Bellarine Express will contact the Master of the Westgate Punt to verify the time they will be passing the area where the Westgate Punt operates when the visibility in the area of operation is equal to or less than 200 metres.
- The Master of the MV Geelong Flyer and MV Bellarine Express will contact other identified operators on the Yarra River when transiting the Yarra River.

## 1. PPF Passage Plan for Speed Exemption Areas within the Yarra River

Please see below both the inward and outward passage plans for both vessels for the speed exemption areas. Further details are available upon request.



## 2. Vessel Operations

Port Phillip Ferries operate scheduled services between Geelong and Portarlington to Docklands in both directions between the hours 06:00 and 21:00 seven days a week. Please refer to the [timetable](#) on our website.

The vessel Master has the responsibility for the safe and the efficient operation of the vessel. The vessel Master is to monitor the speed of the vessel at all times having due regard to vessel traffic, weather conditions and manoeuvrability of the vessel.

The vessel Master may deviate from nominated passages plans if human life, property or the environment is at risk.

## 3. Contact Details

Should you have any queries regarding this announcement and/or would like to provide feedback to Port Phillip Ferries regarding this exemption, please contact us between 8am – 2.00pm on (03) 9514 8959 or email [info@portphillipferries.com.au](mailto:info@portphillipferries.com.au).