



Port Phillip Ferries

15<sup>th</sup> September 2020

## UPDATE

# Trial Speed Exemption for PPF Vessels

(Maritime Safety Victoria Speed Exemption Notice 3.13)



### **Trial Speed Exemption – Westgate Bridge to beacons 39 & 40. Beacons 39 & 40 to the Port Control Centre – inbound passages only.**

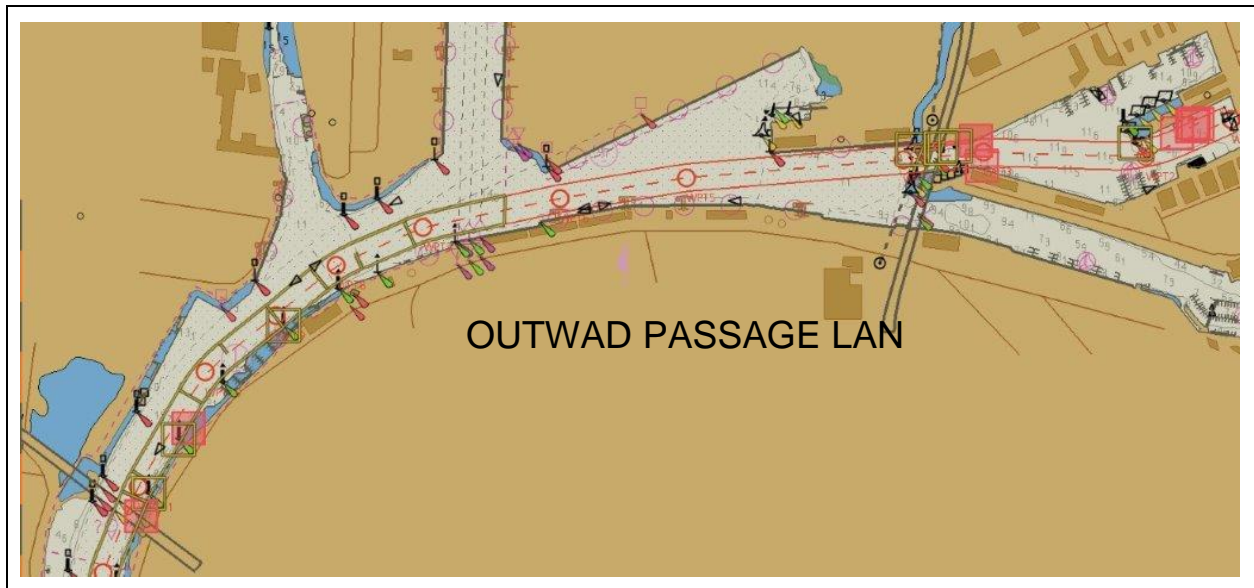
Please be advised that PPF vessels MV *Bellarine Express* and MV *Geelong Flyer* today received a trial exemption from Maritime Safety Victoria (MSV) to operate at an increased speed on the Yarra River as follows;

- Inbound passages - Not to exceed 10 knots between the Southern drip line of the Westgate Bridge and beacons 39 & 40 when the Westgate Bicycle Punt is berthed at the Lorimer Street landing.
- Inbound passages – Not to exceed 6 knots between beacons 39 & 40 and the Port Operations Control Centre.

- Inbound passages – Not to exceed 15 knots between Port Operations Control Centre and the Western drip line of the Bolte Bridge.
- Outbound passages – Not to exceed 15 knots between the Western drip line of the Bolte Bridge and the Southern drip line of the Westgate Bridge.
- Both vessels may only exceed 6 knots when the visibility in the area of operation is equal to or greater than 200 metres.
- Both vessels will slow to 6 knots or less when visibility is 200 metres or less.
- Both vessels will display an amber flashing light at all times while underway.
- The Master of both vessels will contact the Master of the Westgate Bicycle Punt to verify the time PPF vessels will be passing the area where the Westgate Bicycle Punt operates when the visibility in the area of operation is equal to or less than 200 metres.
- The Master of both vessels will contact other identified operators on the Yarra River when transiting the Yarra River.

## 1. PPF Passage Plan for Speed Exemption Areas within the Yarra River

Please see below both the inward and outward passage plans for both vessels for the speed exemption areas. Further details are available upon request.



## 2. Vessel Operations

Port Phillip Ferries operate scheduled services between Geelong and Portarlington to Docklands in both directions between the hours 06:00 and 21:00 seven days a week. Please refer to the [timetable](#) on our website.

The vessel Master has the responsibility for the safe and the efficient operation of the vessel. The vessel Master is to monitor the speed of the vessel at all times having due regard to vessel traffic, weather conditions and manoeuvrability of the vessel.

The vessel Master may deviate from nominated passages plans if human life, property or the environment is at risk.

## 3. Contact Details

Should you have any queries regarding this announcement and/or would like to provide feedback to Port Phillip Ferries regarding this exemption, please contact us between 7am – 8pm on (03) 9514 8959 or email [info@portphillipferries.com.au](mailto:info@portphillipferries.com.au).